

48 Chedworth Road GFF

Horfield, Bristol, BS7 9RZ

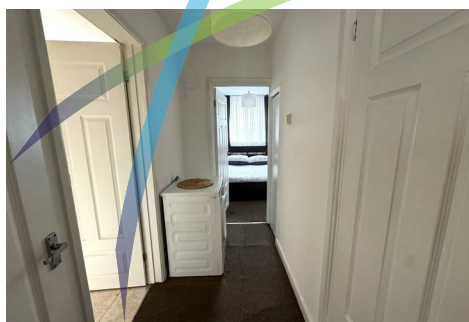
£875 PCM



A Well presented one bedroom garden flat situated on Chedworth Road Horfield, Comprising of a Lounge, Separate MODERN Fitted Kitchen with all White Goods Included, Benefits from Gas Central Heating, Easy Access to Bus Routes and Local Shops and Amenities, Shared communal garden.

Available 30th August 2025.

Council Tax Band A
EPC Rating D



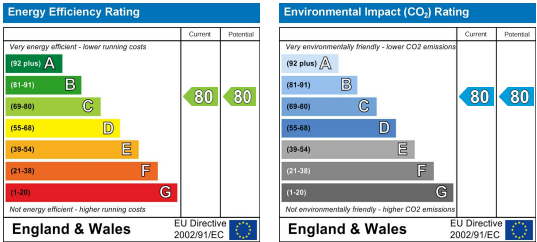
Area Map



Floor Plans



Energy Efficiency Graph



These particulars, whilst believed to be accurate are set out as a general outline only for guidance and do not constitute any part of an offer or contract. Intending purchasers should not rely on them as statements of representation of fact, but must satisfy themselves by inspection or otherwise as to their accuracy. No person in this firms employment has the authority to make or give any representation or warranty in respect of the property.